



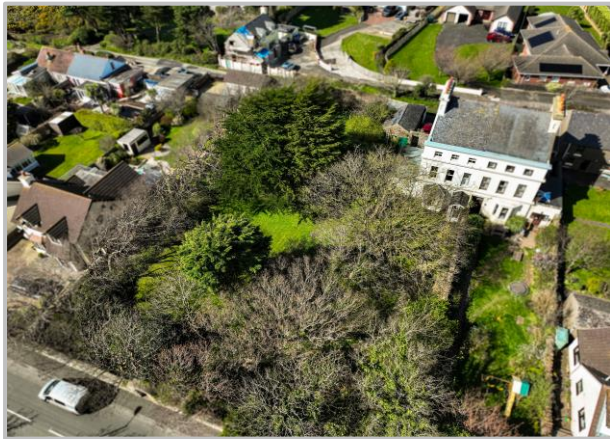
www.chrystals.co.im

Belle Vue House, Belle Vue, Peel, IM5 1UH
Asking Price £495,000

Belle Vue House, Belle Vue ,Peel, IM5 1UH

Asking Price £495,000

A real hidden gem of Peel; A substantial, period semi detached house with very large walled garden. Requiring some general updating but a charming home with a great deal of character and retaining many original features. Kitchen and bathrooms are all recently updated. Huge scope for a family home with secret garden, or potentially for an additional dwelling/s subject to necessary planning consents. 4 bedrooms, 3 reception rooms, Kitchen, 3 bathrooms. Outside is a garden store and large garage with access onto a rear lane. Wonderful scope and potential.



LOCATION

Travelling into Peel along the A1, proceed past Queen Elizabeth II High School and take the second right onto Albany Road. Proceed to the next junction and go straight on, down Church Street and bearing right onto Peveril Road. Drive up the hill as if heading out of town, where the property will be found on your left, after approx. half a mile.

PORCH 7' 11" x 4' 5" (2.41m x 1.35m)

ENTRANCE VESTIBULE 3' 0" x 4' 5" (0.91m x 1.35m)

HALLWAY 18' 5" x 14' 7" (5.61m x 4.44m)

SITTING ROOM 13' 4" x 14' 4" (4.06m x 4.37m)

KITCHEN 12' 1" x 10' 3" (3.68m x 3.12m)

BATHROOM 5' 11" x 7' 2" (1.80m x 2.18m)

DINING HALL 12' 0" x 13' 4" (3.65m x 4.06m)

STORE 15' 0" x 5' 8" (4.57m x 1.73m)

FIRST FLOOR

DRAWING ROOM 14' 3" x 18' 0" (4.34m x 5.48m)

BEDROOM 1 14' 8" x 18' 0" (4.47m x 5.48m)

ENSUITE 6' 0" x 5' 0" (1.83m x 1.52m)

SECOND FLOOR

STORAGE CUPBOARD

BEDROOM 2 15' 2" x 11' 6" (4.62m x 3.50m)

BEDROOM 3 11' 6" x 15' 2" (3.50m x 4.62m)

BEDROOM 4 14' 1" x 6' 2" (4.29m x 1.88m)

BATHROOM 8' 8" x 6' 2" (2.64m x 1.88m)

OUTSIDE

Garden store and large garage with access onto a rear lane.

SERVICES

All main services are connected.

VIEWING

Viewing is strictly by appointment through CHRYSTALS. Please inform us if you are unable to keep appointments.

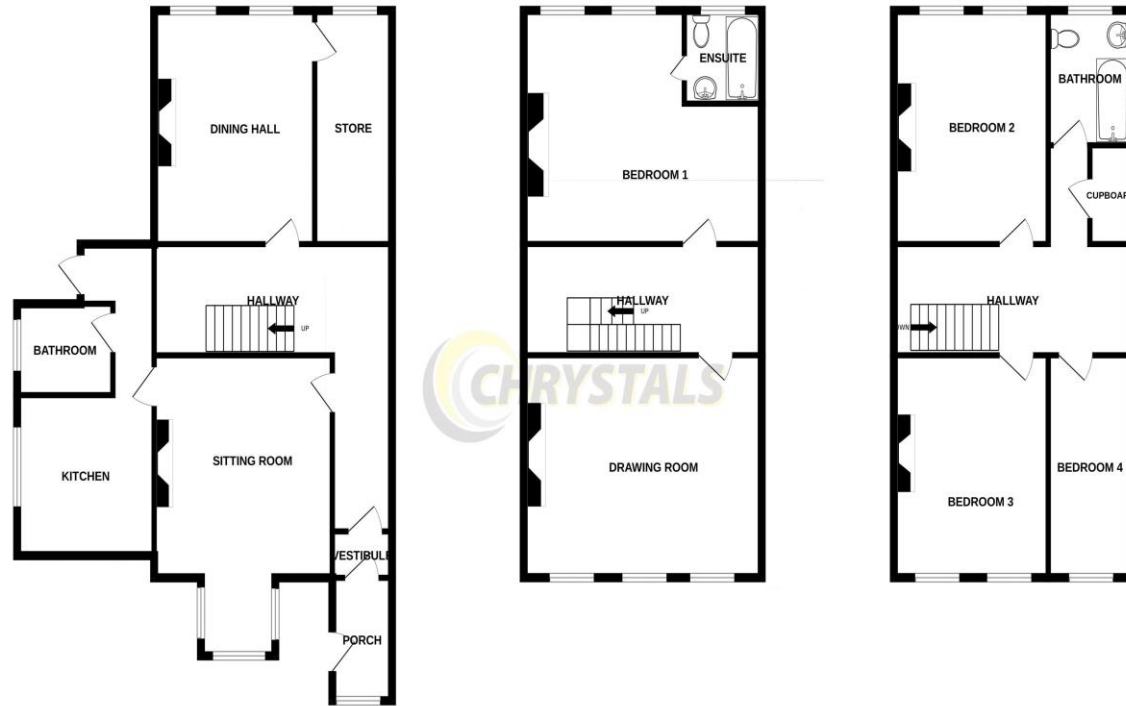
POSSESSION

Vacant possession on completion of purchase. The company do not hold themselves responsible for any expenses which may be incurred in visiting the same should it prove unsuitable or have been let, sold or withdrawn. DISCLAIMER - Notice is hereby given that these particulars, although believed to be correct do not form part of an offer or a contract. Neither the Vendor nor Chrystals, nor any person in their employment, makes or has the authority to make any representation or warranty in relation to the property. The Agents whilst endeavouring to ensure complete accuracy, cannot accept liability for any error or errors in the particulars stated, and a prospective purchaser should rely upon his or her own enquiries and inspection. All Statements contained in these particulars as to this property are made without responsibility on the part of Chrystals or the vendors or lessors.









Measurements are approximate. Not to scale. Illustrative purposes only
 Made with Metropix ©2024

Since 1854



DOUGLAS
 31 Victoria Street
 Douglas IM1 2SE
 T. 01624 623778
 E. douglas@chrystals.co.im

PORT ERIN
 23 Station Road
 Port Erin IM9 6RA
 T. 01624 833903
 E. porterin@chrystals.co.im

COMMERCIAL
 Douglas Office: 01624 625100, commercial@chrystals.co.im

RENTALS
 Douglas Office: 01624 625300, douglasrentals@chrystals.co.im

Directors: Shane Magee M.R.I.C.S.; Neil Taggart BSc (Hons), M.R.I.C.S.; Joney Kerruish BSc (Hons), M.R.I.C.S.; Dafydd Lewis BSc (Hons), M.R.I.C.S., MA (Cantab), Dip Surv Prac., Consultants: Keith Kerruish
 Registered in the Isle of Man No. 34808, Chrystal Bros, Stott & Kerruish Ltd. Trading as Chrystals. Registered Office, 31 Victoria Street, Douglas, Isle of Man IM1 2SE.